

GRILLER MACHINE

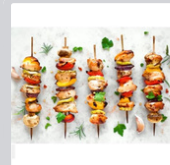
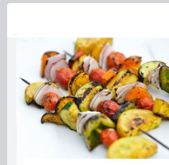


EB-689

(Char Grill)

- Power: 604 kw
- Voltage: 220 V
- Dimension: 600 x 600 x 340 mm
- Weight: 36 Kg

- Smokeless grill (environmentally friendly)
- Smoke series grill, made of stainless steel production.
- With the production of infrared heating panels on the principle of penetrating radiation microwave grill, BBQ hot plate material and the design of 90 degrees, to avoid overflow in barbecue matter produced by combustion fumes, it also has a nice shape, clean, fuel consumption province, hot high efficiency, low cost, easy to move, easy to maintain, versatile features, in fact, shopping malls, supermarkets, restaurants, rich barbecue ideal equipment.



CY280

(Electric Grill)

- Power: 1.8 kw
- Voltage: 220 V
- Dimension: 605 x 340 x 110 mm
- Net Weight: 8 Kg

* Designs and specifications are subject to change for improvement without prior notice