

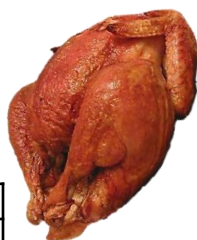
Elec./Gas Rotisseries

The door of the broiler is made of special hot-proof glass of over 300 C, there is a light inside, can watch on the food when broiling. Three switches - the Rotation switch, the Heating switch and the Light switch.



Gas Rotisseries 旋转式燃气烤炉

Model	YXD-168
Rated thermal flow	7kw/h
Feeder fuel specification	φ12 PVC pipe joint
Size	1100x750x750mm
Packing size	1200x850x850mm
Gross weight	93kg



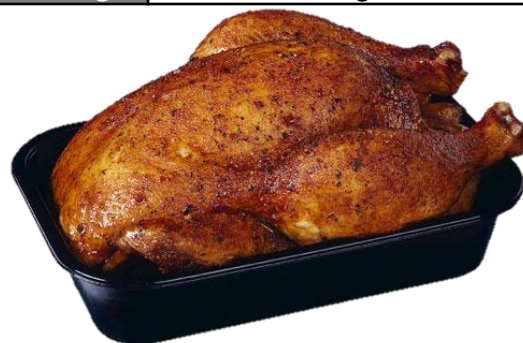
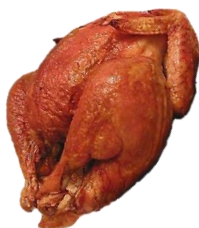
Rotating Electric Rotisseries 旋转式电烤炉

Model	YXD-268
Voltage	240v 50Hz
Power	6kw
Temperature	50 ~ 300 C
Output	1) Heating output - 6000W
	2) Motor output - 80 W
	3) Light output - 80W
Size	1010x670x800mm
Packing size	1150x760x870mm
Gross weight	90kg



Gas Rotisseries 燃气烤炉

Model	YXD-207
Rated thermal flow	6kw/h
Gas type	LPG, natural gas
Size	670x550x1580mm



Electric rotisseries 电 旋转烤食炉

Model	WYE-898
Voltage	240v 50Hz
Power	2.75kw
Temperature	30~110 C
Size	460x660x930mm

* Designs and specifications are subject to change for improvement without prior notice.

BAN HING HOLDING SDN BHD

No. 13-3, Jalan Raja Laut, 50350 Kuala Lumpur, Malaysia.

Tel: 603-4048 1000 / 4042 5970

Fax: 603-4050 8000

Website: www.banhing.com

Email: enquiry@banhing.com